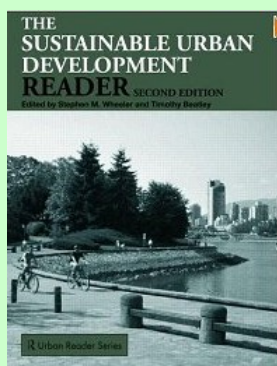


Green Cities

PPPM 445 / CRN 15190
 Fall 2014
 Tuesday/Thursday 4:00-5:20PM
 Lawrence 166
 Ric Stephens, Instructor
ric@uoregon.edu
 (503) 501-7397

Textbook



Wheeler, S. (2008) *Sustainable Urban Development Reader*. London: Routledge Urban Reader Series.

Course Description

Examines the history and future of the interface between urban growth and environmental concerns, and the technological, social, and political forces that continue to shape it.

Class Format

Class sessions will involve the presentation of material by the instructor; class discussion; guest speakers and Skype videoconferencing with international experts. Students should be prepared to participate actively in classroom discussions. We have been invited by the **City of Cascade Locks** to provide planning and design for their downtown. We will conduct a design charrette with citizens, city officials and professionals (transportation will be scheduled). We will also prepare a comprehensive report and recommendations to be given to the City Council and administration.

Required Reading

There is one required textbook: *Sustainable Urban Development Reader*. "Topics covered include land use and urban design, transportation, ecological planning and restoration, energy and materials use, economic development, social and environmental justice, and green architecture and building. All sections have a concise editorial introduction that places the selection in context and suggests further reading. Additional sections cover tools for sustainable development, sustainable development internationally, visions of sustainable community and case studies from around the world." <http://www.routledge.com/books/details/9780415453820/>

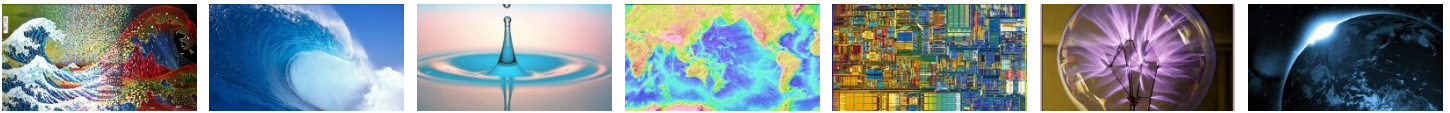
📖 Wheeler, Stephen, M., Beatley, Timothy, *Sustainable Urban Development Reader*, Second Edition, Routledge Urban Reader Series, London, 2008. (ISBN 978-0-415-45382-0 paperback).

In addition to the textbook above, students are required to read all assigned materials posted on the course blackboard site.

Course Grades

The course grade will be based on the following components:


Research Project	25%
Design Charrette / Fieldwork	25%
Assigned Project	25%
Final Exam	25%



Assignments

The research paper is designed to help students develop an in-depth analysis of global issues and apply the concepts studied in class. Students will select a topic that they will study in depth. Topic criteria are as follows: 1) relevance to student, 2) relation to course topics and **City of Cascade Locks**, 3) researchable, 4) strong student interest. Students are encouraged to interview two experts in their topic field. Students will also complete an individual project which matches their interests and utilizes an unfamiliar media such as a blog, infographic, model, photographic essay, photosimulation, Prezi, video, etc. The multiple-choice exam will cover the readings and all materials presented in class.

Schedule

An outline for the class including the assigned  readings for each day, due dates for assignments, and final exam is given below. Additional readings (i.e. City documents) will be assigned throughout the term using the class e-mail list, and announcements will also be sent through the Blackboard e-mail system. The schedule may be revised to accommodate guest speakers and Skype videoconferencing. We have a field trip to the **City of Cascade Locks** for site reconnaissance, presentations and a design charrette to be conducted by the class.



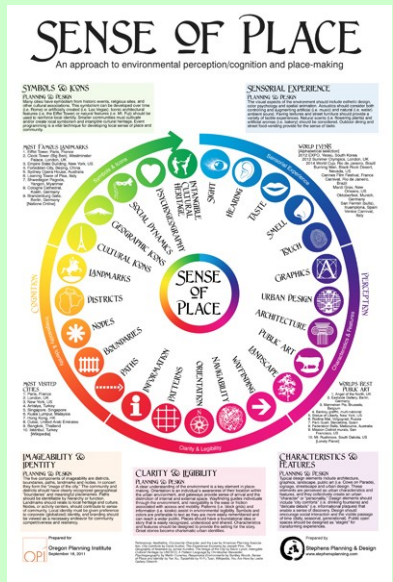
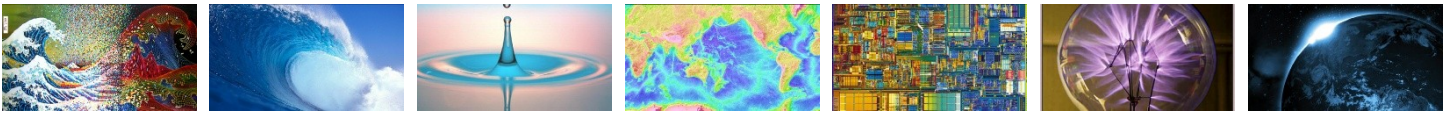
Cascade Locks Marina

Wk Date: Topic Reading Assignment

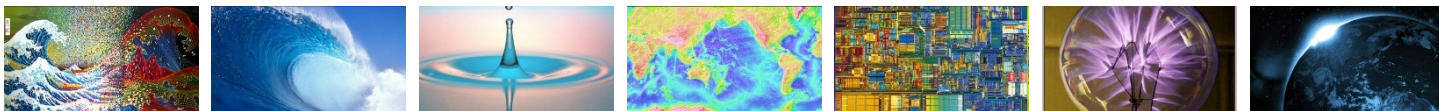
- 1a Sep 30: Course Overview and Major Concepts
- 1b Oct 2: Environmental Ethics
- 2a Oct 7: History & Context  pp 7-80
- 2b Oct 9: Green Cities & EcoCities  pp 315-374
- 3a Oct 14: Land Use & Development  pp 81-112
- 3b Oct 16: Architecture & Urban Design pp 253-278
- 3c Oct 18: Cascade Locks Design Charrette**
- 4a Oct 21: Landscape Architecture, Public Space, Public Art
- 4b Oct 23: Biophilic Design, Urban Ecology, Urban Agriculture
 pp 137-154
- 5a Oct 28: Sense of Place & Ecotourism
- 5b Oct 30 : Transportation  pp 113-136
- 6a Nov 4: Mechanical, Systems & Planning Models
- 6b Nov 6: Resources & Energy  pp 155-180
- 7a Nov 11: Sustainable Development
- 7b Nov 13: Urban Resiliency
- 8a Nov 18: Regenerative Design
- 8b Nov 20: Trends & Projections
- 9a Nov 25: Presentations
- 9b Nov 27: Thanksgiving Holiday**
- 10a Dec 2: Presentations
- 10b Dec 4: Presentations
- 11 Dec 9: 12:30 Final Exam**



Multnomah Falls

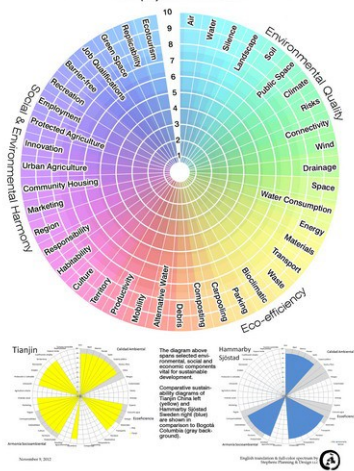


Criteria	Unsatisfactory	Needs Signif. Improv.	Fair	Good	Very Good	Comment	
CONTENT: 70% of research paper grade							
Content criterion #1 Introduction / Background Relevance Application / Replication						<p>Topic Students should select a research topic with the following attributes:</p> <ol style="list-style-type: none"> 1. Related to “green cities” and the class case study. 2. An area of study that the student feels passionate about 3. Relevant to the student’s professional interest 4. Feasible within the constraints of the assignment format <p>If you are concerned about the appropriateness of your topic, please contact the instructor.</p> <p>Format Students are free to format their papers however they chose. If there is concern about an unusual format, please contact the instructor. A hard copy must be submitted unless the student has a valid reason for not attending class on the assignment due date.</p> <p>Length / Size The paper must be between 1,200–2,000 words total including references. This is approximately 3 to 5 pages. Shorter or longer papers will not receive full credit.</p> <p>Referencing APA Format</p> <p>References Research papers must have a minimum of 10 references which may include interviews and digital media.</p>	
Content criterion #2 Conclusions and ten (10) Recommendations							
WRITING: 30% of grade							
Logical structure Introductory section to orient reader Clear sequence of sections Clear structure to sections Uses subheadings effectively Uses paragraphs to support structure Clear topic sentences Links between paragraphs Links within sections							
Professional approach Objective: avoids bias & prejudice Assertions supported by evidence (references, citations) and not just opinion High quality sources							
Appropriate voice Appropriate use of active and passive voice Awareness of audience							
Grammar Noun verb agreement Correct use of tense Complete sentences Appropriate punctuation No run on sentences Other grammar issues							
Referencing APA Format							
Professional Presentation Don't overuse bullets Professional format (page #s, clear print, clear graphics) Free of handwritten edits Use graphics to support text, but not replace it							



Sustainable Development Components

Bogotá Environmental Management Plan
(Plan de Gestión Ambiental - PGA 2008-2038)
Concept by José Fernando Cuervo



Academic Policies

Professional Practice

Students should treat each other and the instructor with the professional courtesy and respect expected in a workplace. All communications relating to this course and all work turned in for this course should reflect professional standards in tone, presentation, formatting and spelling.

The classroom is a place of focuses learning. This requires that students arrive on time, stay until the end of the class period, do not disrupt the class by leaving the room temporarily, and refrain from non-learning activities. Students who fail to adhere to these guidelines will be asked to leave for the remainder of the class session.

Documented Disabilities

Students who have a documented disability and anticipate needing accommodations in this course should make arrangements to see the instructor as soon as possible. They should also request that the Counselor for Students with Disabilities send a letter verifying the disability.

Missed Class Policy

If you miss a class, please arrange to get class notes from a classmate. Lecture notes and/or PowerPoint handouts will be posted to the Blackboard.

Incomplete

Students are strongly discouraged from requesting an incomplete. In accordance with University regulations, an incomplete will only be given when "the quality of work is satisfactory but a minor yet essential requirement of the course has not been completed for reasons acceptable to the instructor." In addition, students should consult the university policies regarding academic practices (<http://libweb.uoregon.edu/guides/plagiarism/students/>).

Academic Misconduct

You are expected at all times to do your

own work. Copying content from other students and submitting it as your own work is grounds for failing the class. The University Student Conduct Code (available at conduct.uoregon.edu) defines academic misconduct.

Plagiarism

Students should properly acknowledge and document all sources of information (e.g. quotations, paraphrases, ideas) and use only the sources and resources authorized by the instructor. If there is any question about whether an act constitutes academic misconduct, it is the students' obligation to clarify the question with the instructor before committing or attempting to commit the act. Additional information is available at: www.libweb.uoregon.edu/guides/plagiarism/students.

Make-up Exams: Final Exam

Students must take the final exam to receive a grade in the course. The date and time for the final exam will not be changed to accommodate scheduling conflicts. Final exams will not be given early under any circumstances. A make-up final exam will be scheduled for students who miss the regularly scheduled final exam due to serious illness or family emergency.

Inclusion Statement

The School of Architecture and Allied Arts is a community that values inclusion. We are committed to equal opportunities for all faculty, staff and students to develop individually, professionally, and academically regardless of ethnicity, heritage, gender, sexual orientation, ability, socio-economic standing, cultural beliefs and traditions. We are dedicated to an environment that is inclusive and fosters awareness, understanding, and respect for diversity. If you feel excluded or threatened, please contact your instructor and/or department head. The University Bias Response Team is also a resource that can assist you. Find more information at their website at <http://bias.uoregon.edu/index.html> or by phoning 541-346-2037.



DJI Phantom Vision+ UAV